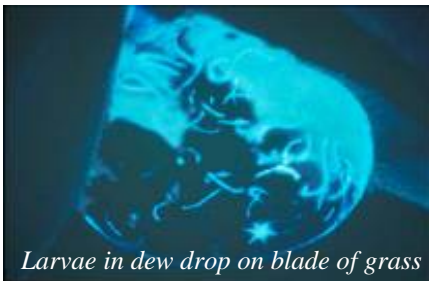


Parasite Management

“Worms”, as we know them, have become very adaptive to our present dewormers and deworming schedule. They are becoming resistant to the dewormers on the market and no new drugs are in the 15 year process of development. Some areas of the United States have a large parasite resistant population. Only horse and manure management can overcome the health risks that parasites bring with them. Since parasite management is second only to providing water and feed in regards to horse husbandry, a quantitative parasite management program needs to be in place to ensure healthy horses.

Problems related to Parasites

- Dull hair coat
- Unthriftiness or loss of condition
- Decreased energy or depression
- Decreased stamina
- Lower resistance to infections
- Permanent damage to internal organs
- Slow growth in young horses
- Pot belly especially young horses
- Colic
- Diarrhea
- Death
- Increased feed costs
- Increased health care costs



Equine Health Solutions offers routine and advance services for the equine companion and equine athlete. These services include:

- In-depth lameness evaluations
- Reproductive services
- Dental services
- Diagnostic Ultrasound
- Internal medicine
- Surgery
- In-house Blood Analysis
- Equine Field Services
- Portable Radiology
- Chiropractic Care



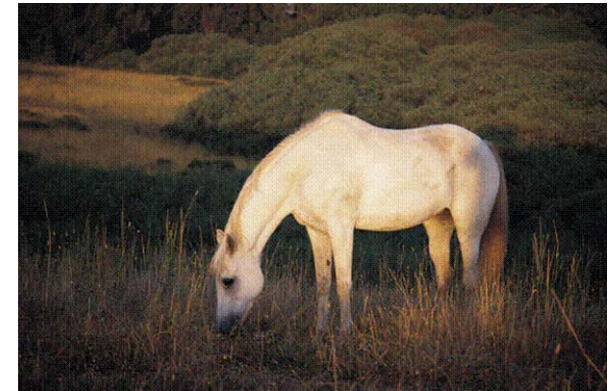
18011 E State Route 58
Raymore, MO 64083
816-322-8040

Office Hours

Mon-Fri 8:00 am - 5:00 pm
Saturday 8:00 - 12:00 pm

www.equinehealthsolutions.com

Quantitative Internal Parasite Management Program

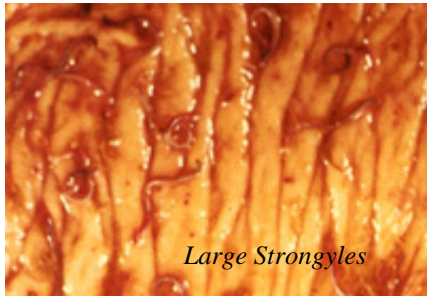


*“Providing Quality Solutions for
the Health of Your Horse.”*

Provided by

Equine Health Solutions

Why have a Quantitative Internal Parasite Management Program?



Large Strongyles

We have out smarted ourselves. Some parasites have developed resistance to dewormers due to

complete herd rotational deworming procedures. A quantitative internal parasite management program identifies which horses have developed an immunity and aids in keeping the parasite load at a minimum. Therefore, they may need to be dewormed only 1-2 times a year. However, the horse who has been identified as highly infested, even possibly immune compromised, needs to be dewormed 4 - 6 times a year.

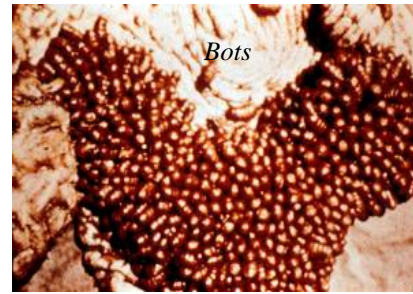
Knowing the parasite infestation levels of the herd provides important medical information for better management. At the same time, it reduces the amount of dewormers given in a herd, will slow the development of parasite drug resistance, reduce the environmental contamination of chemicals and lessen the financial burden for dewormers.



Tapeworms

What is included in a Quantitative Parasite Management Program?

The major component is a quantitative fecal. By using 2-3 fecal balls, a horse's infestation rate is determined by measuring the parasite eggs per gram. The horses generally fall into one of three levels of infestation: high, medium, or low. This information is used to develop client specific management recommendations and a horse specific deworming schedule.



Bots



Roundworms

From the information gained through the fecal and a premise walk through, a horse and manure management

plan can be developed. Proper horse and manure management will significantly affect the parasite exposure and infestation of your horses. The advantage of good management? Parasites can not develop resistance to management like they can dewormers.

How should the manure be handled to perform a quantitative fecal?

Since the parasite eggs mature fairly rapidly after being expelled from the horse, the bowel movement should be harvested within a couple of hours of being deposited. The following procedure will ensure accurate and usable information. With a Ziploc baggie labeled with the horse's name inverted over your hand, pick up 2 - 3 fresh fecal balls. The Ziploc baggie is then reverted over the fecal balls, zipped closed and placed in an ice cooler or refrigerator. The sample needs to be brought to EHS on ice in the baggies within 12 hours of the horse passing the feces to conduct a quantitative fecal.

Quantitative Parasite Management Program

- *Premise walk through, evaluation, and written report* \$60/hour
- *Quantitative fecals*

1 - 5 horses	\$18.00/horse
6 - 10 horses	\$17.00/horse
11 - 20 horses	\$16.00/horse
21 or more horses	\$15.00/horse
- *5% discount on all dewormers purchased from Equine Health Solutions*

To enroll, or for more information, please call EHS at
816-322-8040